

Eniris Solar

Alarm management EMAIL

Thresholds on connectivity, PR, energy production. Messages via email. With options for escalation, personalized alarm messages, alarm levels and user management for alarms.

Alarm management SMS

Thresholds on connectivity, PR, energy production. Messages via SMS. With options for escalation, personalized alarm messages, alarm levels and user management for alarms.

Targets

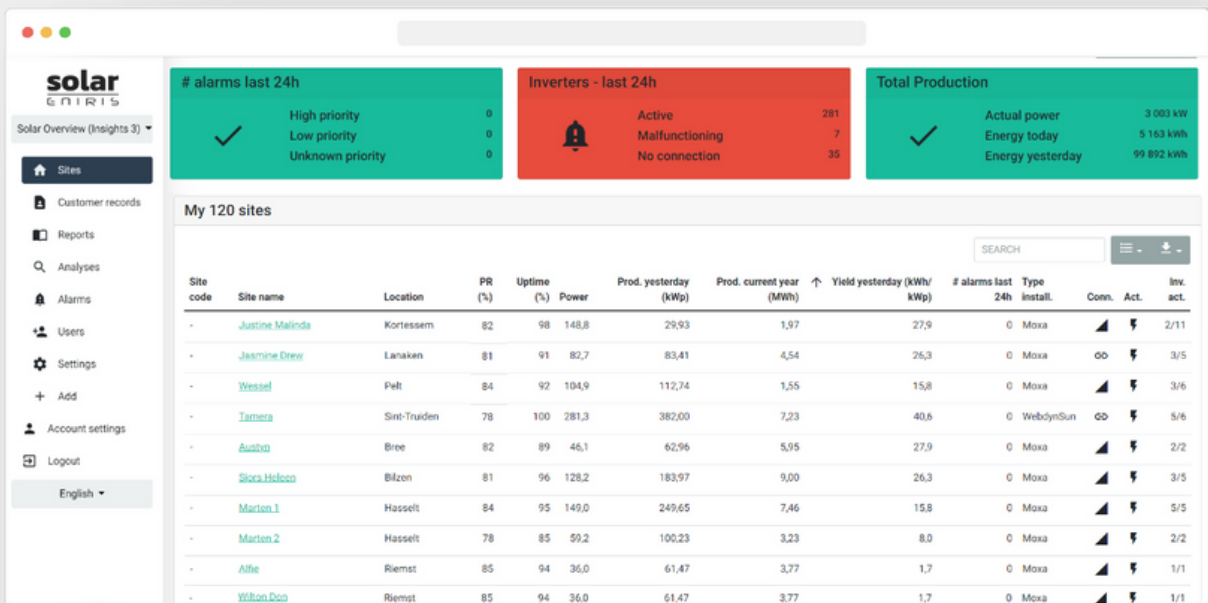
Enter your targets per installation: based on PR, Yield, Uptime, energy production and take degradation over time into account.

Metering Company

Automatic processing of the metering company's data (e.g. Fluvius/BE or Fudura/NL)

Document Upload & Management

Document Upload & Management, (max. 50 mb/site), Eg. for uploading a string plan



The screenshot displays the Eniris Solar dashboard interface. At the top, there are three summary cards: '# alarms last 24h' (green) showing 0 high, 0 low, and 0 unknown priority alarms; 'Inverters - last 24h' (red) showing 281 active, 7 malfunctioning, and 35 with no connection; and 'Total Production' (green) showing 3,003 kW actual power, 5,153 kWh energy today, and 99,892 kWh energy yesterday. Below these is a table titled 'My 120 sites' with columns for Site code, Site name, Location, PR (%), Uptime (%), Power, Prod. yesterday (kWp), Prod. current year (MWh), Yield yesterday (kWh/kWp), # alarms last 24h, Type install., Cons., Act., and Inv. act. The table lists several sites with their respective metrics.

Site code	Site name	Location	PR (%)	Uptime (%)	Power	Prod. yesterday (kWp)	Prod. current year (MWh)	Yield yesterday (kWh/kWp)	# alarms last 24h	Type install.	Cons.	Act.	Inv. act.
-	Justine Malinda	Kortesseem	82	98	148,8	29,93	1,97	27,9	0	Moxa	▲	⚡	2/11
-	Jasmine Greer	Lanaken	81	91	82,7	83,41	4,54	26,3	0	Moxa	∞	⚡	3/5
-	Wessel	Pelt	84	92	104,9	112,74	1,55	15,8	0	Moxa	▲	⚡	3/6
-	Tamara	Sint-Truiden	78	100	281,3	382,00	7,23	40,6	0	WebdynSun	∞	⚡	5/6
-	Austria	Bree	82	89	46,1	62,96	5,95	27,9	0	Moxa	▲	⚡	2/2
-	Sjora Helcon	Bilzon	81	96	128,2	183,97	9,00	26,3	0	Moxa	▲	⚡	3/5
-	Marten 1	Hasselt	84	95	149,0	249,65	7,46	15,8	0	Moxa	▲	⚡	5/5
-	Marten 2	Hasselt	78	85	59,2	100,23	3,23	8,0	0	Moxa	▲	⚡	2/2
-	Alfie	Riemst	85	94	36,0	61,47	3,77	1,7	0	Moxa	▲	⚡	1/1
-	Wilton Don	Riemst	85	94	36,0	61,47	3,77	1,7	0	Moxa	▲	⚡	1/1



Transfer of historical data

Complete your annual reports and customer dashboards with the historical data.



Satellite Data

In addition to the irradiation data via the local weather stations.



Brandlabeling

A platform completely according to your corporate identity and part of your own ecosystem. Accessible via your URL (eg portal.yourcompany.com), your logos, e-mails from your mailbox.



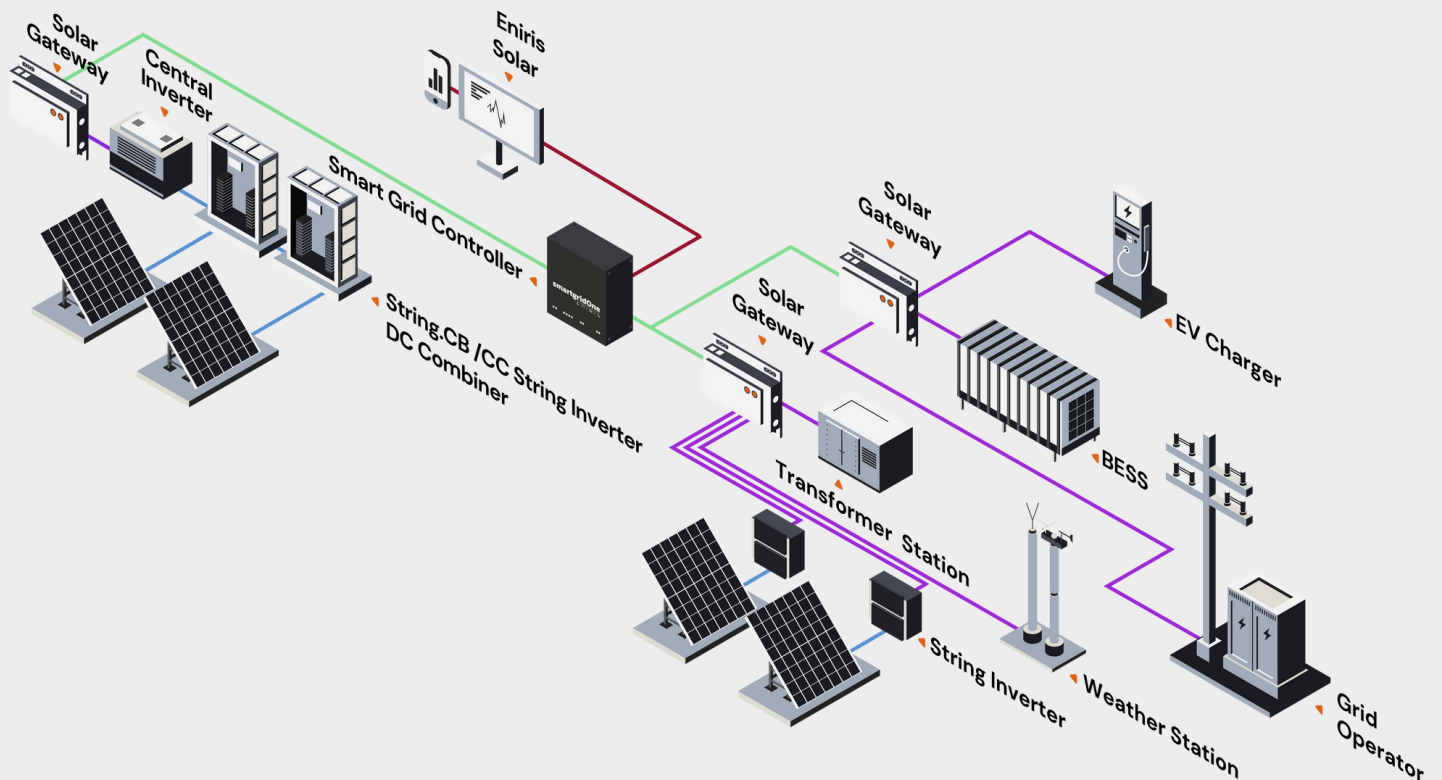
Energy Markets

Making the energy prices of a specific energy market available. (e.g. EPEX Spot).



Ticketing

Assign a ticket to alarms and issues.





Customer records

Keep track of your customers without necessarily monitoring them.



Tailor-made Automatic Report

Create an automatic report that summarizes one or more installations.



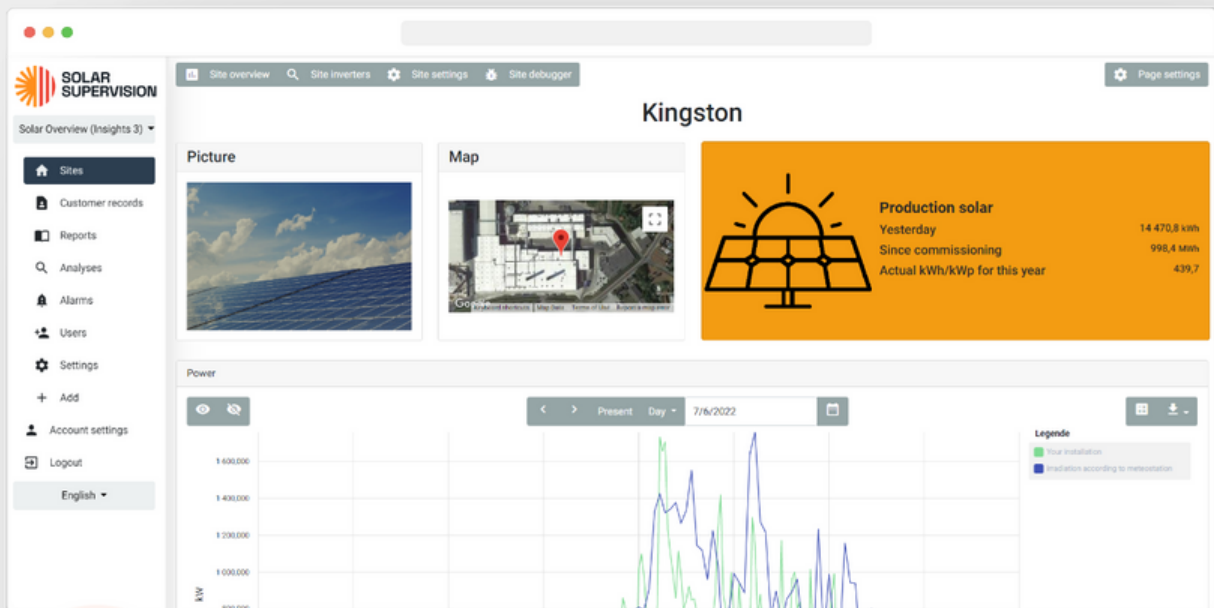
Data export via API

Integrate with your applications thanks to our API interface.



Add comments to events.

Add comments to events. Eg. in your report you want to give an overview of the interventions.



Contacteer ons

info@eniris.be

sales@eniris.be

Eniris BV

BTW BE 0751.828.588

Eedverbondkaai 242 bus 28,

9000 Gent, Belgium

BE: +32 494 10 70 47

NL: +31 613 42 82 15

DE: +49 731 969 08852

